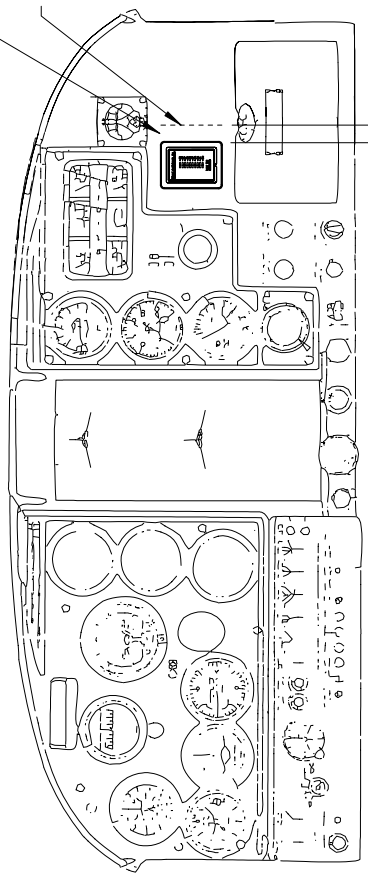


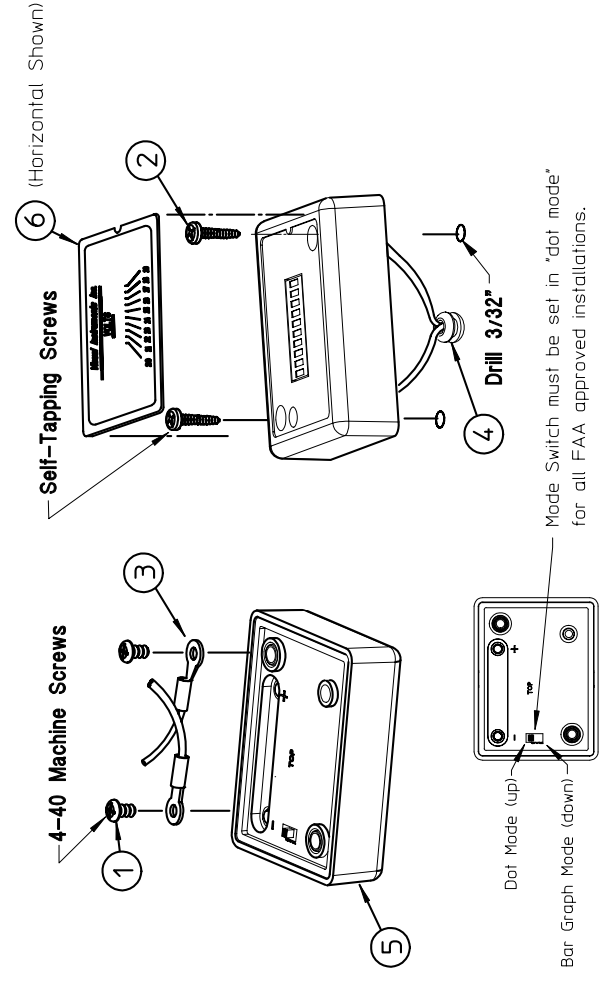
B-2000-0165-1	
SYM	REVISIONS
A	Released for Production
APPROVED	DATE
SAM	11/8/02

Typical installation Voltmeter mounted vertically on the right side of instrument panel.

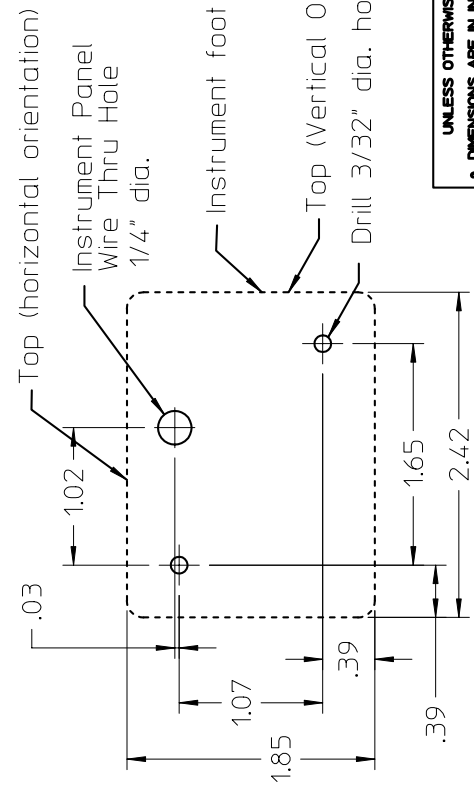


Typical Installation

Locate a minimum of 1/2" to the nearest device to avoid obstructing Pilots view of adjoining instruments.



Mode Switch must be set in "dot mode" for all FAA approved installations.



Drill Pattern

- UNLESS OTHERWISE SPECIFIED DIMENSIONS ARE IN INCHES
- THIRD ANGLE PROJECTION
- TOLERANCES
 - .XX±.02
 - .XXX±.005
- DO NOT SCALE THIS DRAWING

ITEM	QTY.	PART/MATERIAL-DESCRIPTION	Visual Part Number	Control Drawing Number
6	1	24V Label Set	2000-0175	B-2000-0175-1
5	1	Instrument Assembly	2000-2650	B-2000-2650-1
4	1	Grommet 5/32ID X 3/8od for .250 dia hole	2000-5001	B-2000-5001-1
3	2	Ring Terminal #4	2000-5002	B-2000-5002-1
2	2	Tapping Screw 4X.75 sms phil 18-8 SS pan	2000-5003	B-2000-5003-1
1	2	4-40 Machine screws 1/4" pan Posi SS	2000-5004	B-2000-5004-1

Steve Mahoney	03/07/96	24V Voltmeter Installation	Visual
DRAWN BY	DATE		
Steve Mahoney	03/07/96	TITLE	PART NUMBER
ENGINEER/CHECKER			
RELEASE TO PROD.		X .75	2000-0165
'2000-0165_revA.mi		1	B-2000-0165-1
FILE		2	OF

THIS DOCUMENT CONTAINS CONFIDENTIAL, PROPRIETARY INFORMATION THAT IS VISUAL INSTRUMENTS (VI) PROPERTY. DO NOT DISCLOSE TO OR DUPLICATE FOR OTHERS EXCEPT AS AUTHORIZED BY VI.